

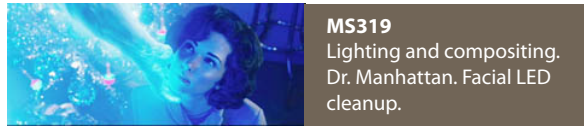
2045 Paramount Drive
Los Angeles, CA 90068

Vukster@gmail.com
<http://www.vukster.com>

Reel breakdown: All shots



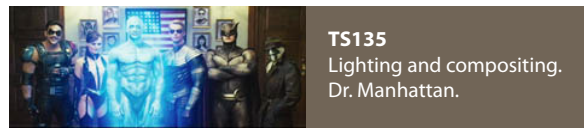
MS340
Lighting and compositing.
Dr. Manhattan and
'Silk Spectre 2' body double.



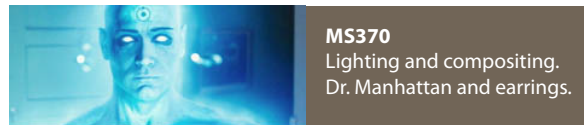
MS319
Lighting and compositing.
Dr. Manhattan. Facial LED
cleanup.



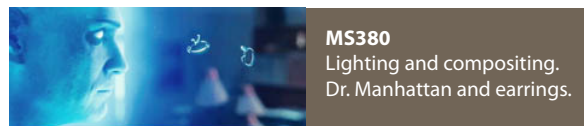
MS312
Lighting and compositing.
Dr. Manhattan.



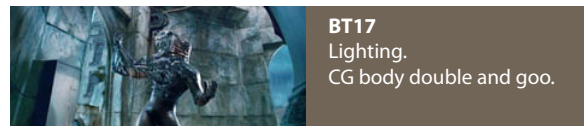
TS135
Lighting and compositing.
Dr. Manhattan.



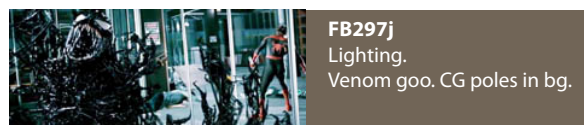
MS370
Lighting and compositing.
Dr. Manhattan and earrings.



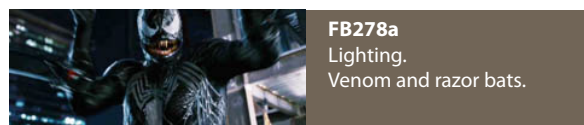
MS380
Lighting and compositing.
Dr. Manhattan and earrings.



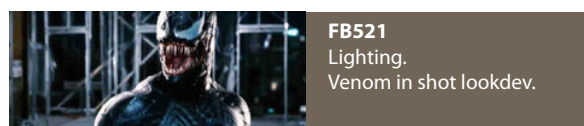
BT17
Lighting.
CG body double and goo.



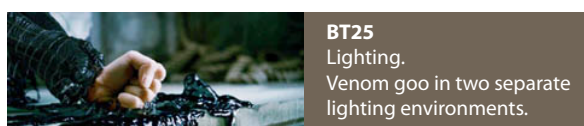
FB297j
Lighting.
Venom goo. CG poles in bg.



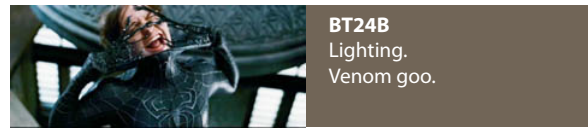
FB278a
Lighting.
Venom and razor bats.



FB521
Lighting.
Venom in shot lookdev.



BT25
Lighting.
Venom goo in two separate
lighting environments.



BT248
Lighting.
Venom goo.



MD168
Lighting and compositing.
Matte cleanup and set
extension. CG globe lighting.



MD170
Lighting and compositing.
CG globe and bg buildings
set extension.



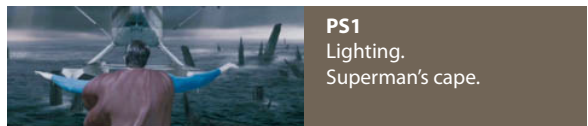
MD090
Lighting and compositing.
Globe lighting, sky reflection
car cleanup.



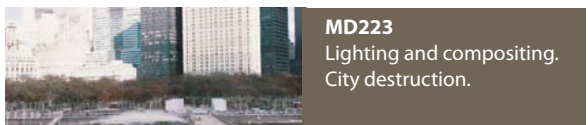
SD47
Lighting.
Space shuttle tiles.



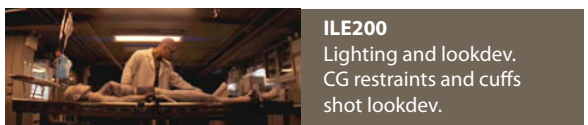
SD183
Lighting.
Cape and Superman body
double.



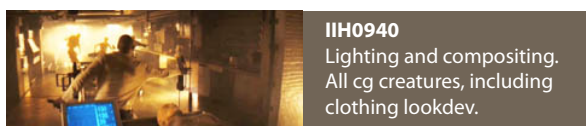
PS1
Lighting.
Superman's cape.



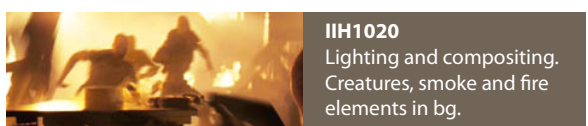
MD223
Lighting and compositing.
City destruction.



ILE200
Lighting and lookdev.
CG restraints and cuffs
shot lookdev.



IIH0940
Lighting and compositing.
All cg creatures, including
clothing lookdev.



IIH1020
Lighting and compositing.
Creatures, smoke and fire
elements in bg.